

24468F - LOT 64 - CERT 20654  
 24468G - LOT 65 - CERT 20654  
 28722E - LOT 17 - CERT # 41121

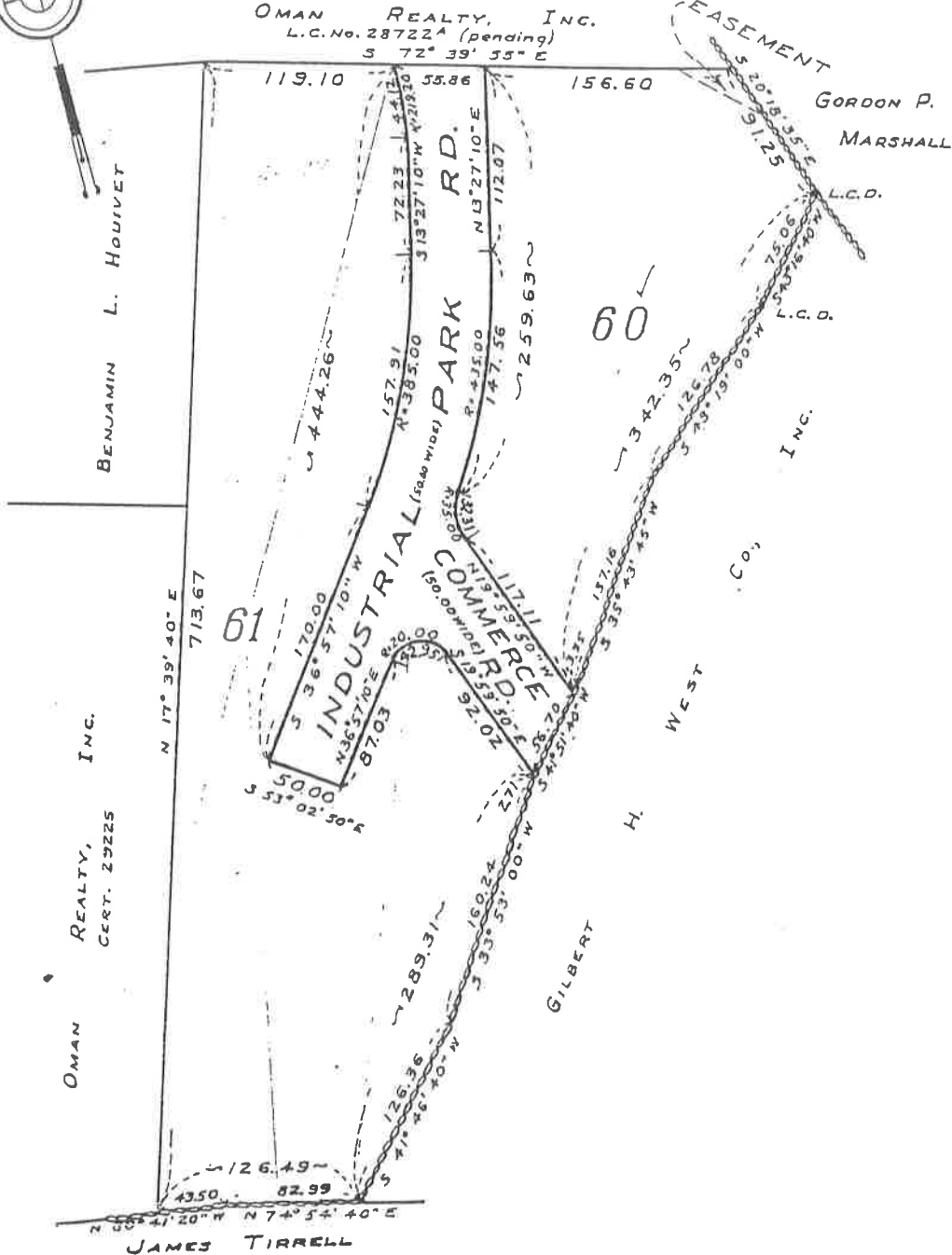
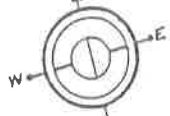
24468<sup>C</sup>

SUBDIVISION PLAN OF LAND IN HINGHAM

Lewis W. Perkins & Son, Surveyors THIS PLAN FILED WITH

November 8, 1964

CERTIFICATE NO. 20654



(J)

MAY 12 1965

Subdivision of Lot 58  
 Shown on Plan 24468  
 Filed with Cert. of Title No. 20654  
 Registry District of Plymouth County  
 Separate certificates of title may be issued for land  
 shown hereon as Lots 60 & 61  
 By the Court.

"MORE SURVEY DATA ON FILE"

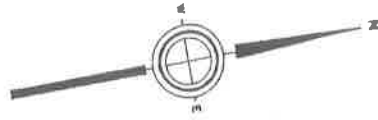
DEC 28 1964  
 Registrar

Copy of part of plan  
 filed in  
 LAND REGISTRATION OFFICE  
 DEC. 28, 1964  
 Scale of this plan 80 feet to an inch  
 C.M. Anderson, Engineer for Court

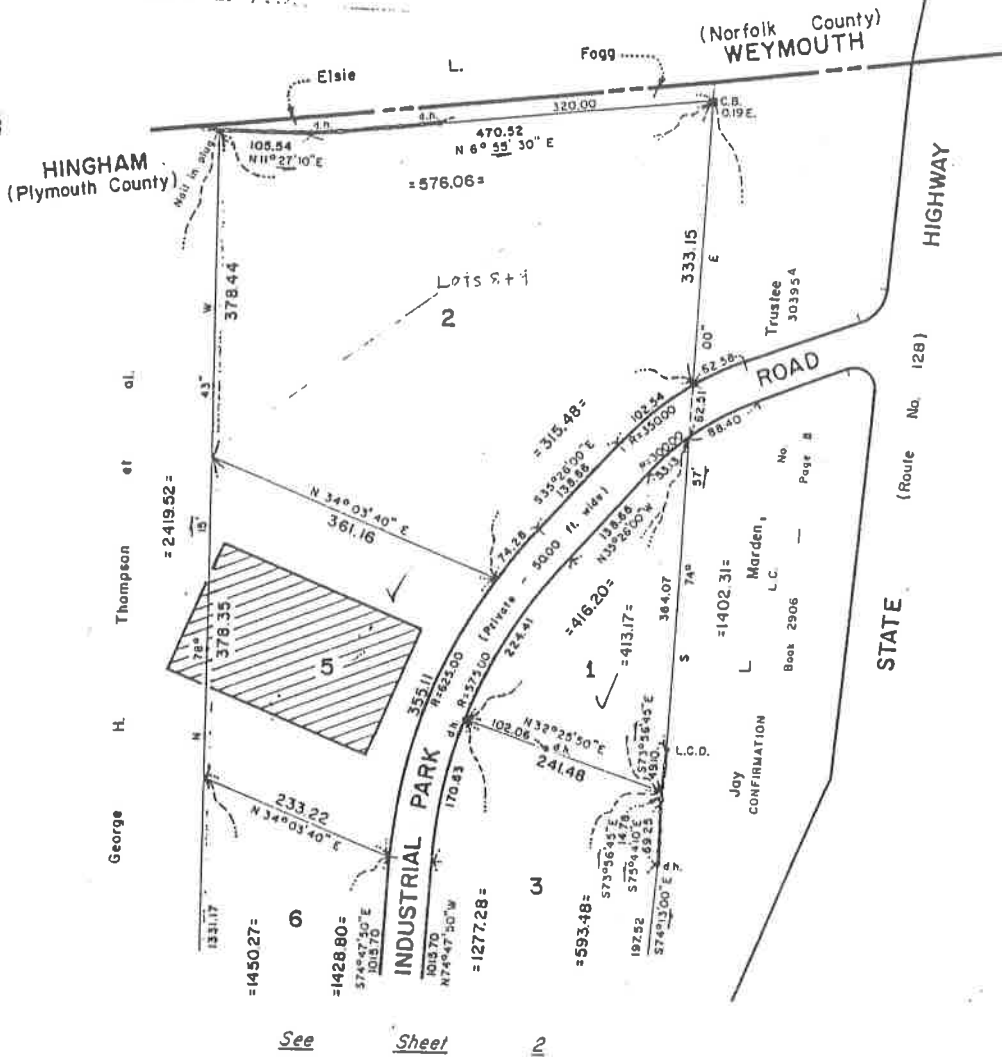
PLAN OF LAND IN HINGHAM

Lewis W. Perkins & Son, Surveyors

November 8, 1964  
May 21, 1965  
January 14, 1966



THIS PLAN FILED  
CERTIFICATE No. 41721



Locus comprises  
lots 1-7 incl.

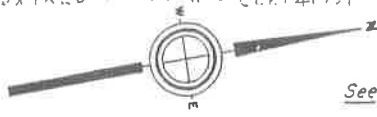
24488 C 3  
Copy of part of plans 28722A<sup>2</sup> & 28722A<sup>3</sup>  
filed in  
**LAND REGISTRATION OFFICE**  
DEC. 28, 1964 - JUNE 1, 1965 - JAN. 18, 1966  
Scale of this plan 160 feet to an inch  
C.M. Anderson, Engineer for Court

1 13-67  
13 2K

28722C - Lot 10 - Cont. 41721  
28722D - Lot 11 - Cont. 41721

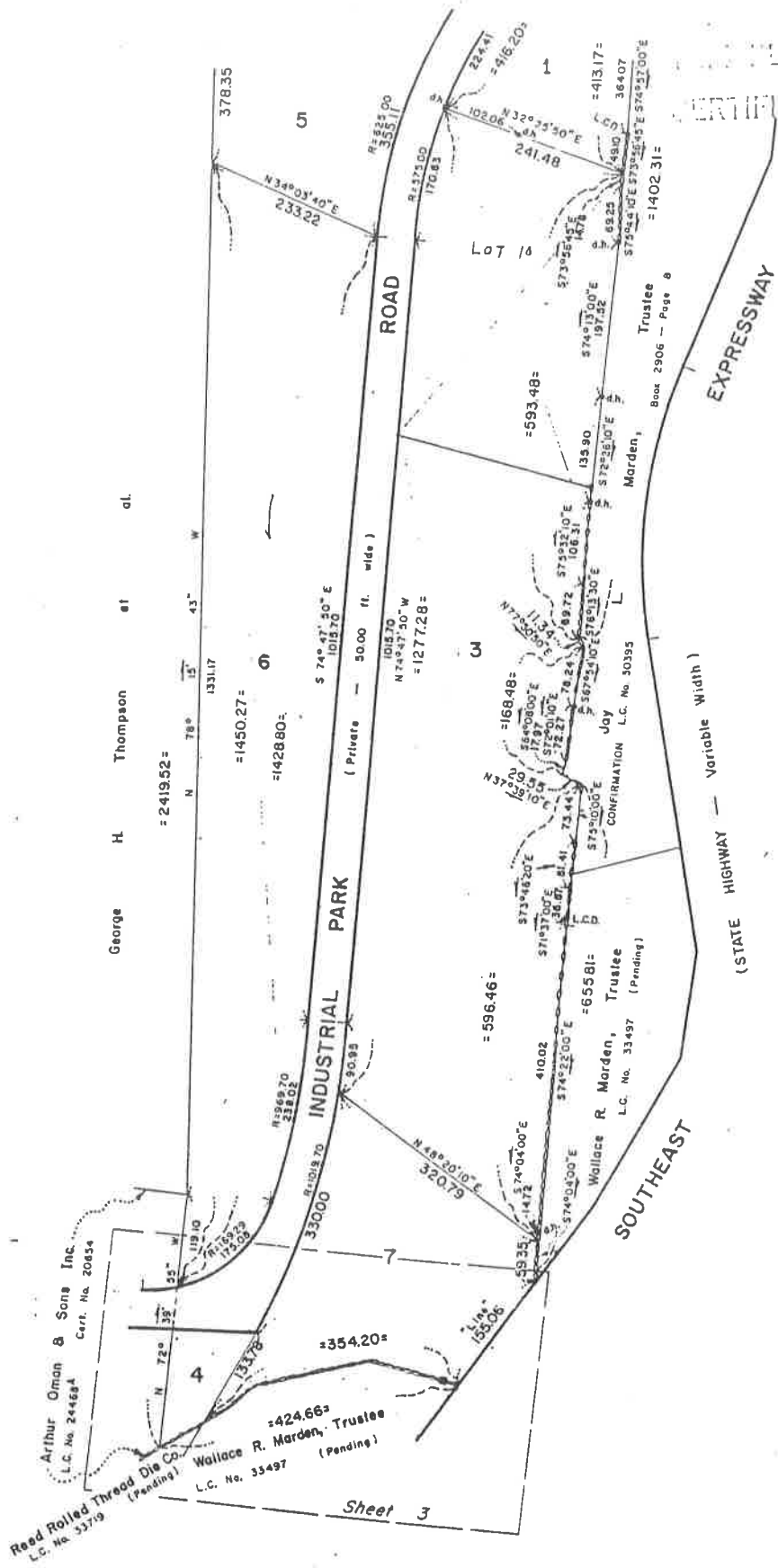
28722E - Lot 12 - Cont. 41721  
28722F - Lot 13 - Cont. 41721

28722<sup>A</sup>  
(Sheet 2)



See Sheet 1

MAR 4 1968



CERTIFICATE NO. 41721

Arthur Oman & Sons Inc.  
L.C. No. 24459A  
Cert. No. 20634

Read Rolled Thread Die Co.  
L.C. No. 33719  
(Pending)

Wallace R. Morden, Trustee  
L.C. No. 33497  
(Pending)

Sheet 3

Scale of this plan 160 feet to an inch

28722<sup>A</sup>  
(Sheet 3)

PLAT FILED WITH  
CERTIFICATE NO. 41721



SOUTHEAST (STATE HIGHWAY  
NO. 155.06 LINE)

ACCESS

Variable Width) EXPRESSWAY

2

7

= 354.20 =

TURF

(SUNSHINE)

Woods

R. L. C.

Woods

Sheet

MAR 4 1968

Sec

INDUSTRIAL  
PARK  
ROAD

6

61

N 13° 27' 10" E 56.52

= 2419.52 =

ELECTRIC  
AREAS  
(60.00 feet wide)

4

60

Arthur Oman & Sons Inc.

L.C. No. 24468<sup>A</sup> — Cert. No. 20854  
(See L.C. No. 24468<sup>C</sup>)

IAM

Scale of this plan 40 feet to an inch



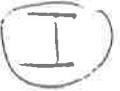
114

PLAN OF LAND IN HINGHAM  
 Lewis W. Perkins & Son, Surveyor  
 April 2, 1965

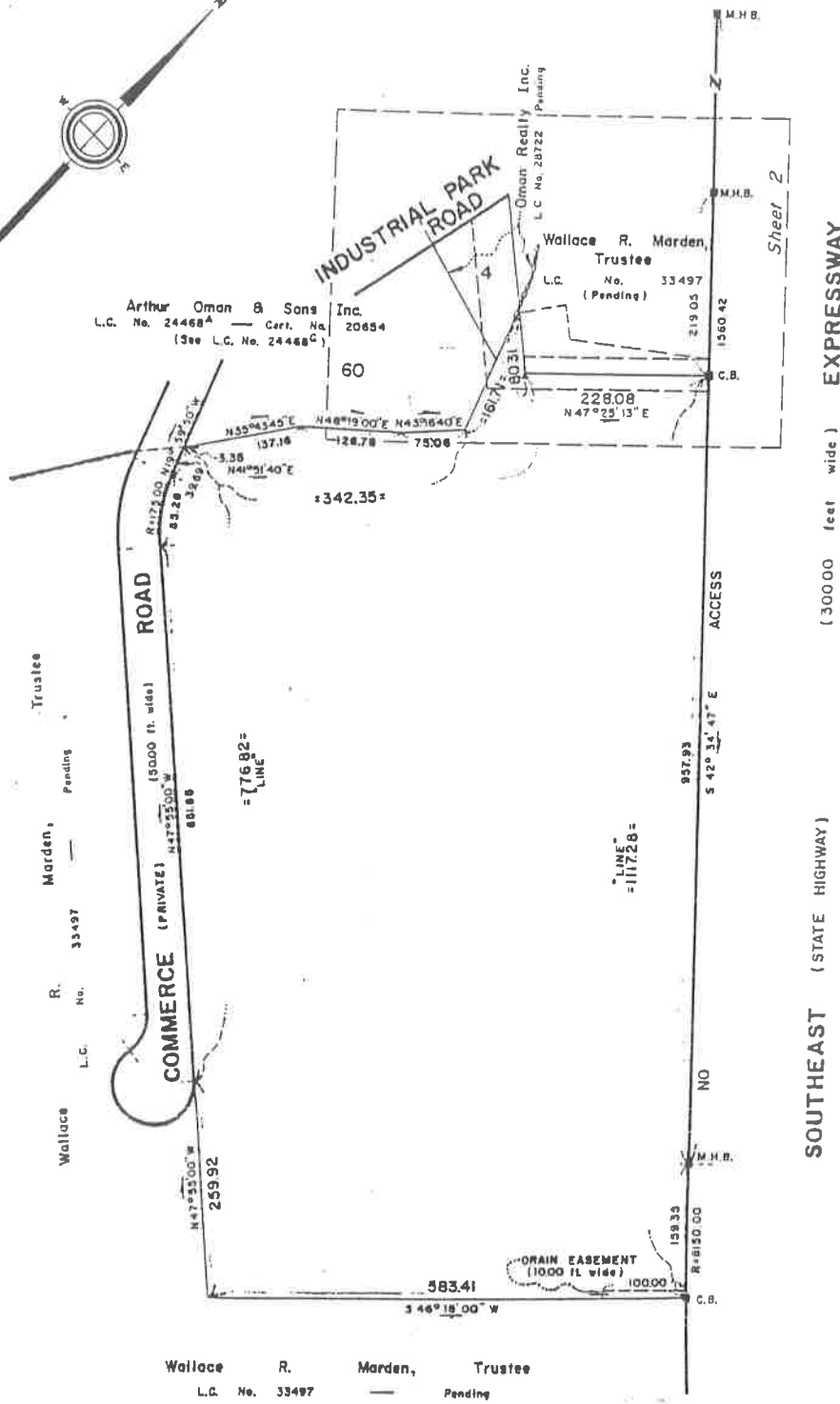
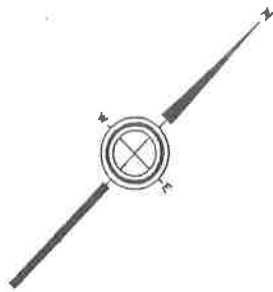
33719<sup>A</sup>

Sheet 1

THIS PLAN FILED WITH  
 CERTIFICATE NO. 39264



DEC 28 1966



Wallace R. Marden, Trustee  
 L.C. No. 33497 Pending

Copy of part of plan  
 filed in  
**LAND REGISTRATION OFFICE**  
 April 3, 1965  
 Scale of this plan 160 feet to an inch  
 C.M. Anderson, Engineer for Court

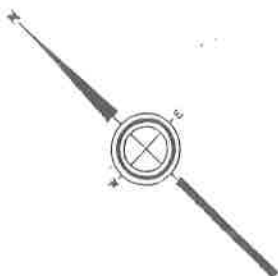
8-25 64

P.B. O.K.

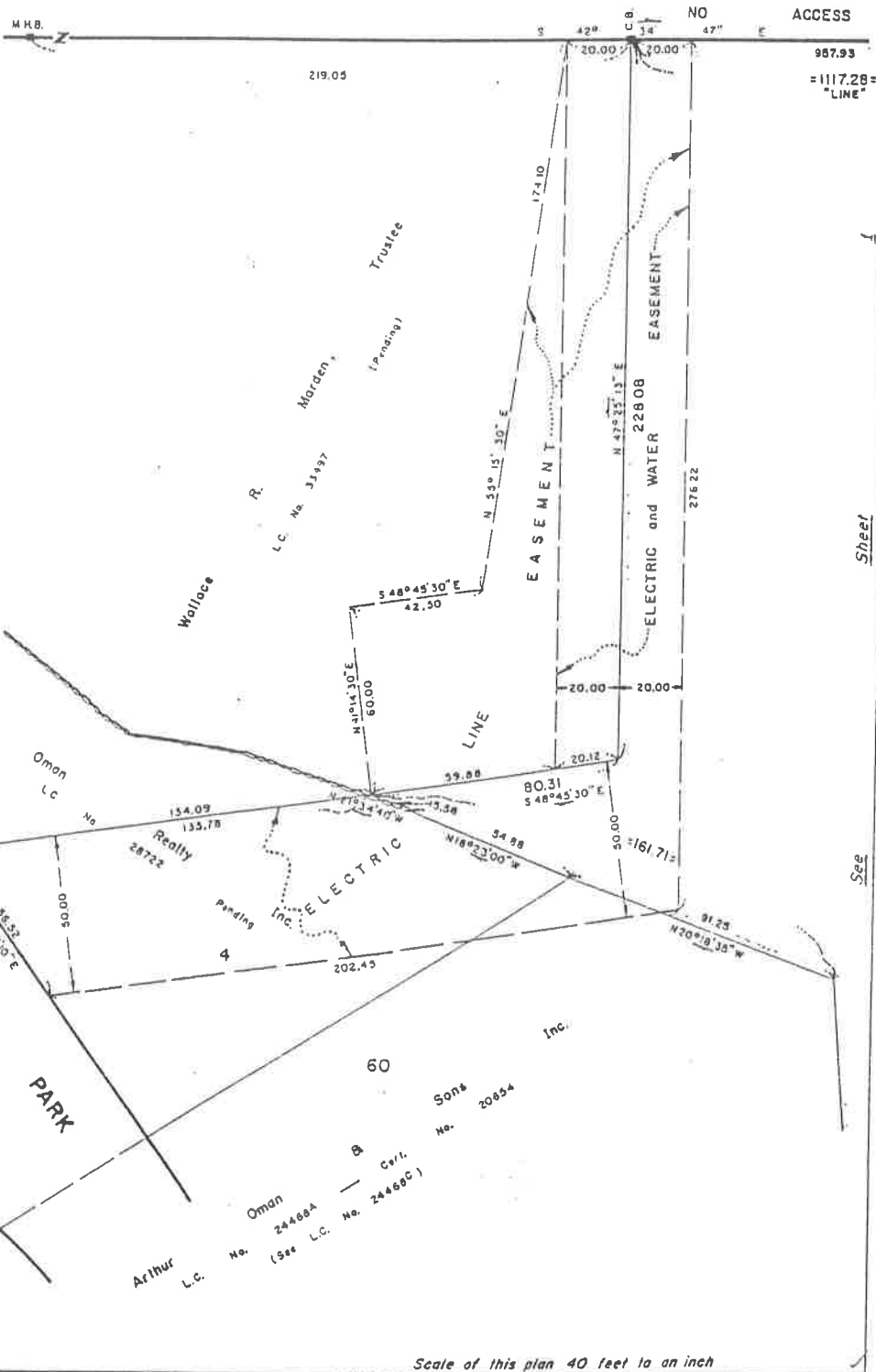
33719<sup>A</sup>  
Sheet 2

THIS PLAN FILED WITH  
CERTIFICATE NO. 39764

U



SOUTHEAST (STATE HIGHWAY — 300.00 feet wide) EXPRESSWAY



Sheet  
See

DEC 28 1966

Scale of this plan 40 feet to an inch