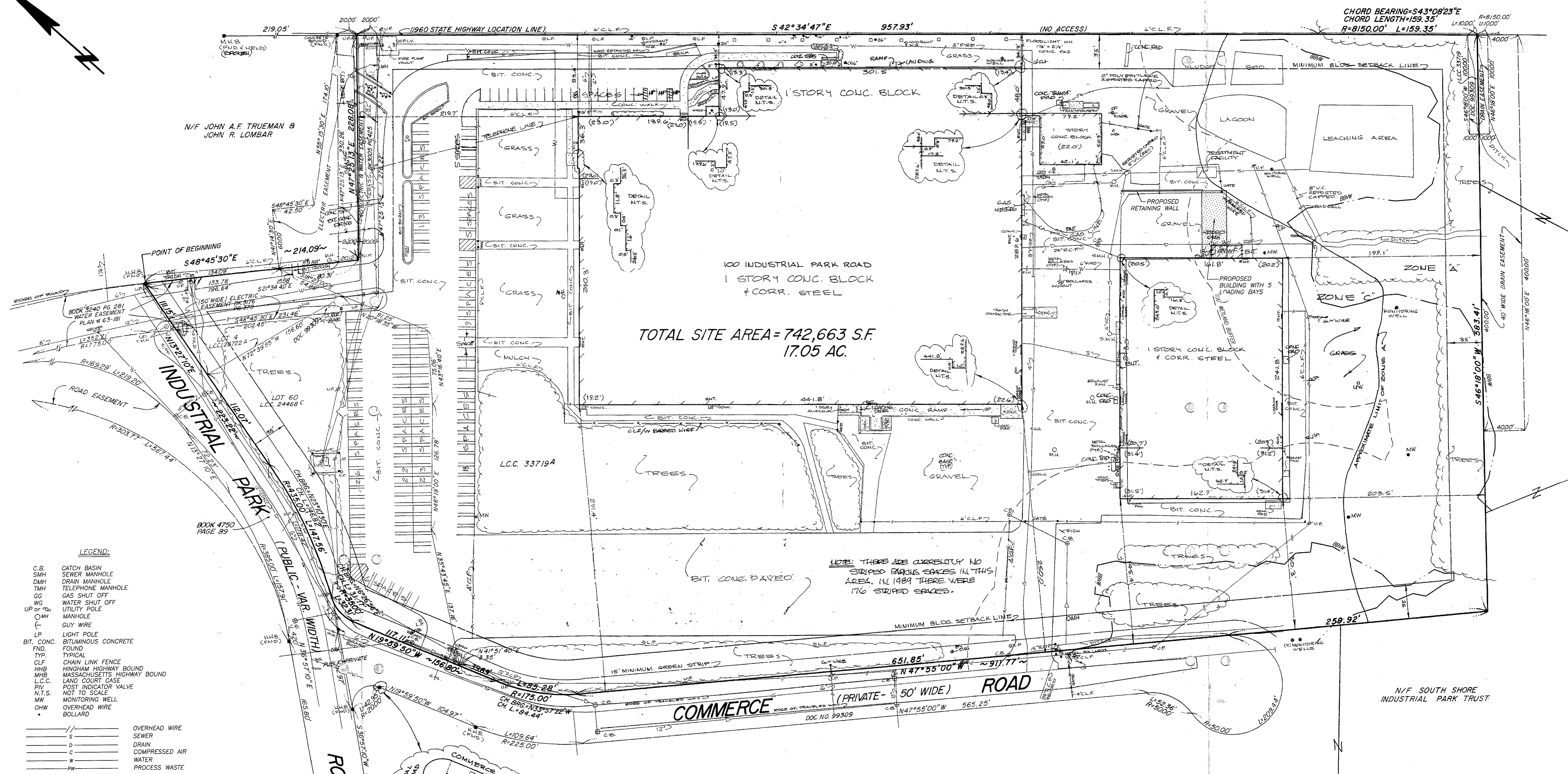


SOUTHEAST

(STATE HIGHWAY ROUTE 3 - 3000' WIDE)

EXPRESSWAY



TOTAL SITE AREA = 742,663 S.F.
17.05 AC.

NOTE: THERE ARE CURRENTLY NO STRIPED PARKING SPACES IN THIS AREA. IN 1989 THERE WERE 176 STRIPED SPACES.

CHORD BEARING = S43°08'23"E
CHORD LENGTH = 159.35'
R = 8150.00' L = 159.35'

LEGEND:

- C.B. CATCH BASIN
- SMH SEWER MANHOLE
- DMH DRAIN MANHOLE
- TMH TELEPHONE MANHOLE
- GG GAS SHUT OFF
- WO WATER SHUT OFF
- UP or U UTILITY POLE
- OMH MANHOLE
- GUY WIRE
- LP LIGHT POLE
- BIT. CONC. BITUMINOUS CONCRETE
- FND. FOUND
- TYP. TYPICAL
- CLF CHAIN LINK FENCE
- HMB HINGHAM HIGHWAY BOUND
- MHB MASSACHUSETTS HIGHWAY BOUND
- L.C.C. LAND COURT CASE
- P.V. POST INDICATOR VALVE
- N.T.S. NOT TO SCALE
- MW MONITORING WELL
- OHW OVERHEAD WIRE
- BOLLARD
- OVERHEAD WIRE
- SEWER
- DRAIN
- COMPRESSED AIR
- WATER
- PROCESS WASTE

- REFERENCES
- PLYMOUTH COUNTY REGISTRY OF DEEDS
 - BOOK 3005 PAGE 425
 - BOOK 3173 PAGE 309
 - BOOK 3178 PAGES 379-380
 - BOOK 3178 PAGES 6-10
 - BOOK 3240 PAGES 281-283
 - BOOK 3249 PAGE 584
 - BOOK 4750 PAGES 88-89

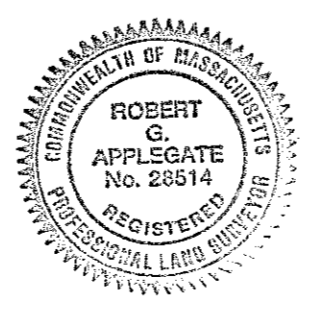
PLAN NO. 63-181
PLAN BOOK 12 PLAN 943
PLAN BOOK 21 PLAN 234
PLAN TITLED ALTA/ACSM LAND TITLE SURVEY, 100 INDUSTRIAL PARK ROAD, HINGHAM (PLYMOUTH COUNTY), MASS., SCALE 1"=40', DATED DECEMBER 8, 1989, UPDATED DECEMBER 15, 1999, BY HARRY R. FELDMAN, INC.

MASSACHUSETTS LAND COURT
L.C.C. 24466
L.C.C. 28722
L.C.C. 33457
L.C.C. 33718

CERTIFICATE OF TITLE NO. 74860
LAND COURT DOC. NO. 99309
LAND COURT DOC. NO. 103632
LAND COURT DOC. NO. 197524

MASSACHUSETTS STATE HIGHWAY LAYOUT NO. 4924

I CERTIFY THAT THIS PLAN IS BASED ON AN ACTUAL FIELD SURVEY AND THE LATEST RECORD PLANS, DEEDS AND CERTIFICATES OF TITLE.



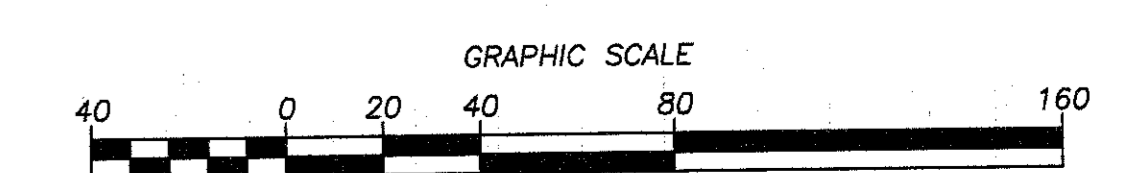
NOTE: WETLAND AND 100' WETLAND BUFFER PROVIDED BY BEALS ASSOCIATES INC.

PLOT PLAN
100 INDUSTRIAL PARK ROAD
HINGHAM (PLYMOUTH COUNTY), MASS.

SCALE: 1"=40'
HARRY R. FELDMAN, INC.
112 SHAWMUT AVENUE
BOSTON, MASS. 02118

JANUARY 25, 2008
LAND SURVEYORS
PHONE: (617)357-9740
WWW.HARRYRFELDMAN.COM

FELDMAN
Professional Land Surveyors



RESEARCH KAM	FIELD CHIEF JA	CHECKED JCB	APPROVED JCB	FILE NAME 12175
CALC	CADD TMT	FIELD CHECKED	CRD FILE 12175	JOB NO. 12175