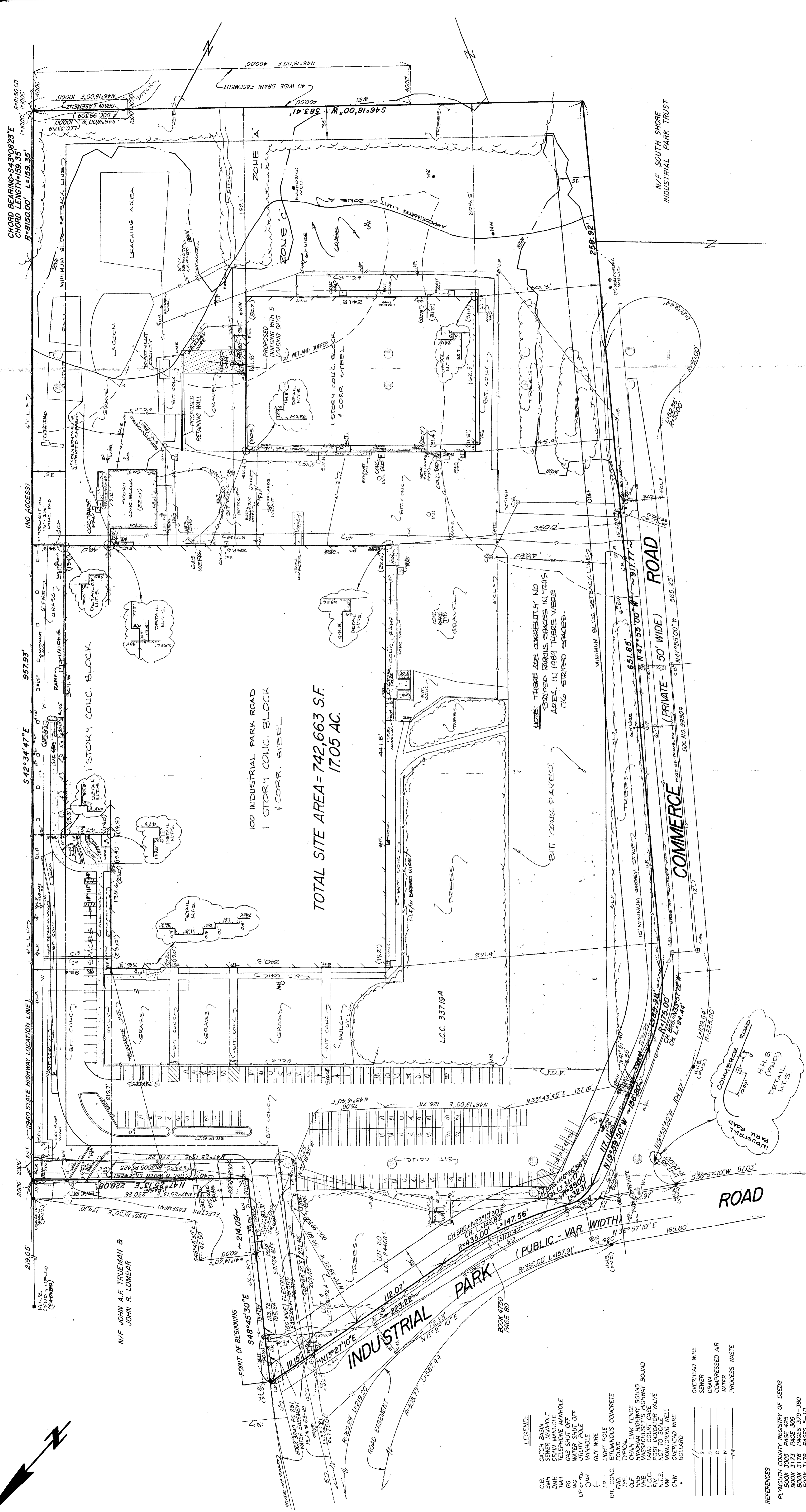


SOUTHEAST

(STATE HIGHWAY ROUTE 3 - 30000' WIDE)

EXPRESSWAY



PLOT PLAN
100 INDUSTRIAL PARK ROAD
HINGHAM (PLYMOUTH COUNTY), MASS.
 SCALE: 1"=40'
 HARRY R. FELDMAN, INC.
 112 SHAWMUT AVENUE
 BOSTON, MASS. 02118
 PHONE: (617)357-9740
 WWW.HARRYFELDMAN.COM

FELDMAN
 Professional Land Surveyors

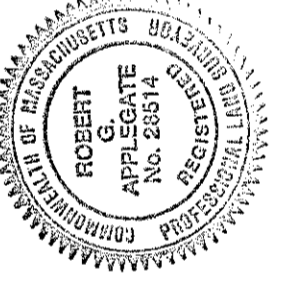
GRAPHIC SCALE
 0 20 40 80 160

RESEARCH MAN FIELD CHIEF J.M. CHECKED B.S.C.A. APPROVED 02/24/98 FILE NAME 12175
 CALC. CAD. INT. FIELD CHECKED. ORD. FILE 12175 JOB NO. 12175

NOTE: WETLAND AND 100' WETLAND BUFFER PROVIDED BY BEALS ASSOCIATES, INC.

I CERTIFY THAT THIS PLAN IS BASED ON AN ACTUAL FIELD SURVEY AND THE LATEST RECORD PLANS, DEEDS AND CERTIFICATES OF TITLE.

H. R. Feldman 1/29/08



- LEGEND:**
- CB ACTON BASIN
 - DMH DRAIN MANHOLE
 - TMH TELEPHONE MANHOLE
 - GC GAS SHUT OFF
 - UP OFF UTILITY POLE
 - OMH MANHOLE
 - GUY WIRE
 - LP LIGHT POLE
 - BT. CONC. BITUMINOUS CONCRETE
 - TD. TYPICAL
 - CLF CHAIN LINK FENCE BOUND
 - HMB HINGHAM HIGHWAY RIGHTWAY BOUND
 - L.C.C. LAND COURT CASE
 - PH.S. POST INDICATOR VALVE
 - MM MONITORING WELL
 - OHW OVERHEAD WIRE
 - BOLLARD
 - OVERHEAD WIRE
 - SEWER
 - DRAIN
 - COMPRESSED AIR
 - WATER
 - PROCESS WASTE

- REFERENCES**
- PLYMOUTH COUNTY REGISTRY OF DEEDS
 - BOOK 3005 PAGE 425
 - BOOK 3173 PAGE 309
 - BOOK 3176 PAGE 280
 - BOOK 3178 PAGES 271-0
 - BOOK 3240 PAGES 281-283
 - BOOK 3249 PAGE 584
 - BOOK 4750 PAGES 68-69

PLAN NO. 63-181
 PLAN BOOK 12 PLAN 843
 PLAN TITLED "ALTA/CASIM LAND TITLE SURVEY, 100 INDUSTRIAL PARK ROAD, HINGHAM (PLYMOUTH COUNTY), MASS., SCALE 1"=40', DATED DECEMBER 8, 1989, UPDATED DECEMBER 15, 1989, BY HARRY R. FELDMAN, INC.

MASSACHUSETTS LAND COURT
 L.C.C. 24486
 L.C.C. 28722
 L.C.C. 33719
 L.C.C. 33719A

CERTIFICATE OF TITLE NO. 74860
 LAND COURT DOC. NO. 103632
 LAND COURT DOC. NO. 187524
 MASSACHUSETTS STATE HIGHWAY LAYOUT NO. 4924