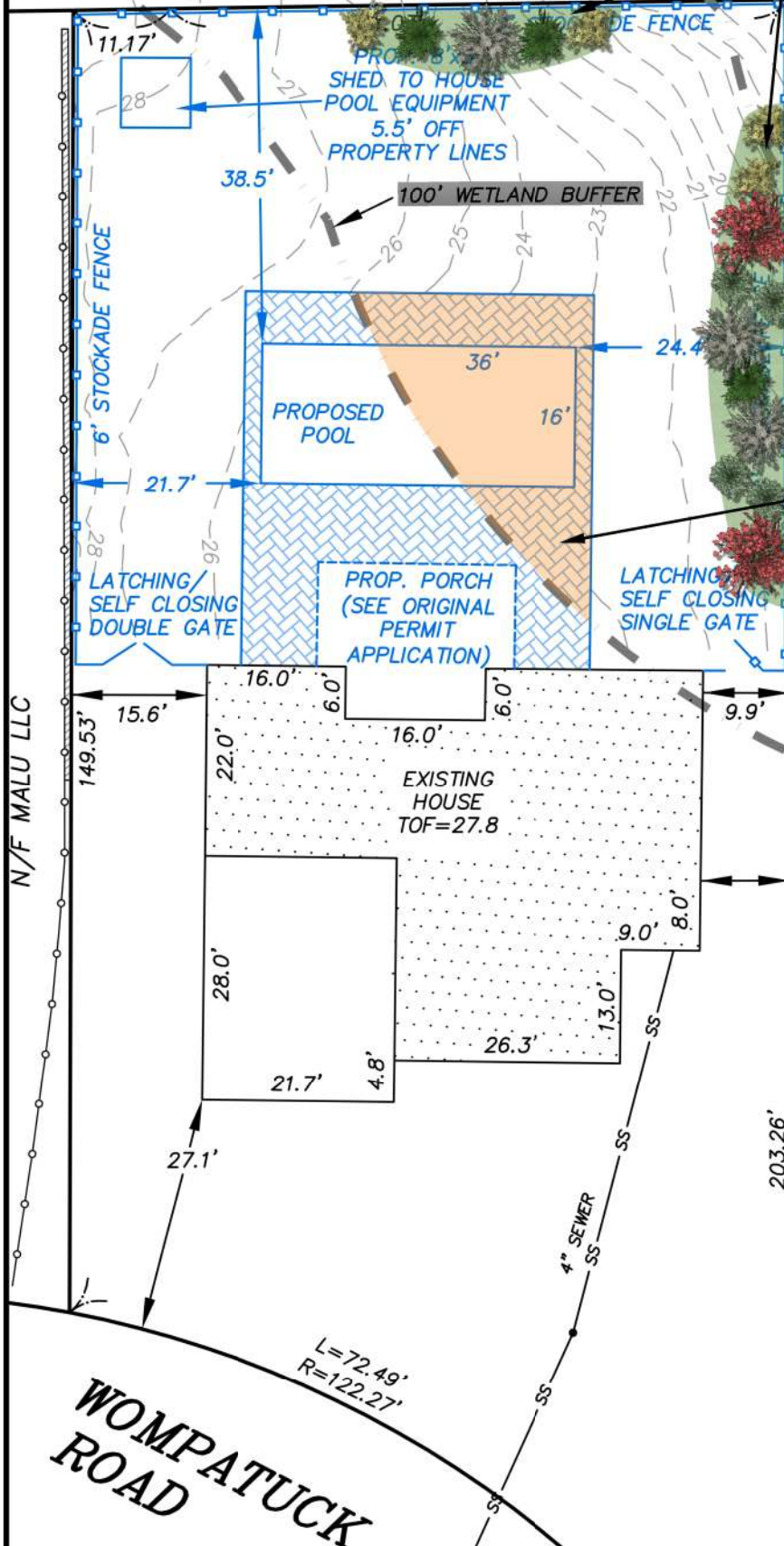
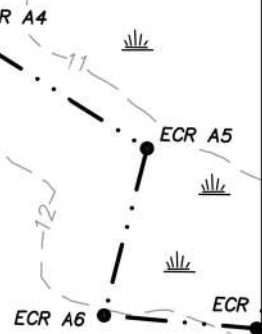


**ZONING TABLE:**  
 FRONT SETBACK - 25'  
 SIDE SETBACK - 15'  
 REAR SETBACK - 15'  
 MIN. AREA - 20,000 S.F.  
 MIN. FRONTAGE - 125'  
 MAX. HEIGHT - 35'  
 OR 2.5 STYS.

**WETLAND NOTE:**  
 WETLAND LINE AS SHOWN BY  
 ENVIRONMENTAL CONSULTING &  
 RESTORATION, LLC IN JUNE OF 2019.

PROPOSED MITIGATION  
 AREA 610 SQ. FT.  
 (1:1 RATIO)



APPROX. 610 SQ. FT. OF  
 PROPOSED POOL & PATIO  
 WITHIN 100-FOOT BUFFER

LOCUS INFORMATION  
 CURRENT OWNER:  
 OCEANSIDE BUILDERS LLC

**PROPOSED MITIGATION PLAN**  
**DATE: DEC. 11, 2020**  
**PREPARED BY: ECR, LLC**

Plant Legend				
Symbol	Qty	Common	Botanical	Size
	3	Mountain Laurel	Kalmia latifolia	2-3 ft.
	4	Smooth Hydrangea	Hydrangea arborescens	2-3 ft.
	4	Witch Hazel	Hamamelis virginiana	2-3 ft.
	3	Flowering Dogwood	Cornus florida	5-6 ft.
	2	Smooth Serviceberry	Amelanchier laevis	5-6 ft.

Native Upland Wildlife Forage & Cover Meadow Mix

**Mix Composition**

- 34.9% *Andropogon gerardii*, 'Niagara' (Big Bluestem, 'Niagara')
- 27.0% *Panicum virgatum*, 'Cave-In-Rock' (Switchgrass, 'Cave-In-Rock')
- 21.0% *Elymus virginicus*, PA Ecotype (Virginia Wildrye, PA Ecotype)
- 9.0% *Sorghastrum nutans*, NY4 Ecotype (Indiangrass, NY4 Ecotype)
- 3.0% *Rudbeckia hirta*, Coastal Plain NC Ecotype (Blackeyed Susan, Coastal Plain NC Ecotype)
- 2.0% *Chamaecrista fasciculata*, PA Ecotype (Partridge Pea, PA Ecotype)
- 1.5% *Helianthus annuus*, PA Ecotype (Osage Sunflower, PA Ecotype)
- 1.0% *Cirsium discolor* (Plains Coreopsis)
- 0.4% *Desmodium canadense*, PA Ecotype (Showy Ticktrefoil, PA Ecotype)
- 0.1% *Monarda fistulosa*, Fort Indiantown Gap-PA Ecotype (Wild Bergamot, Fort Indiantown Gap-PA Ecotype)

FOR MORE INFORMATION, PLEASE REFER TO THE PROJECT NARRATIVE.

**22 WOMPATUCK ROAD**  
**HINGHAM, MA**

SCALE 1" = 20' DATE: 11-02-20

**HOYT LAND SURVEYING**  
 1287 WASHINGTON STREET  
 WEYMOUTH MA. 02189  
 781-682-9192

I CERTIFY:

1. THIS PLAN IS THE RESULT OF AN ACTUAL  
 ON THE GROUND SURVEY.

PETER G. HOYT P.L.S.



GRAPHIC SCALE

SCALE: 1"=20'