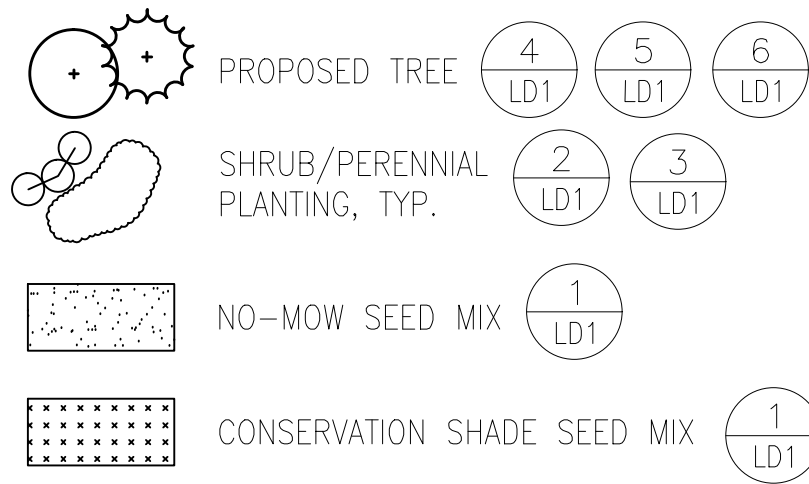


**LEGEND**



NO-MOW SEED MIX shall be similar to "No Mow Fescue Mix" as manufactured by Vermont Wildflower Farm, of Hinesburg, VT; or approved equal. Approved equals may be submitted for evaluation, but must meet the following specifications:

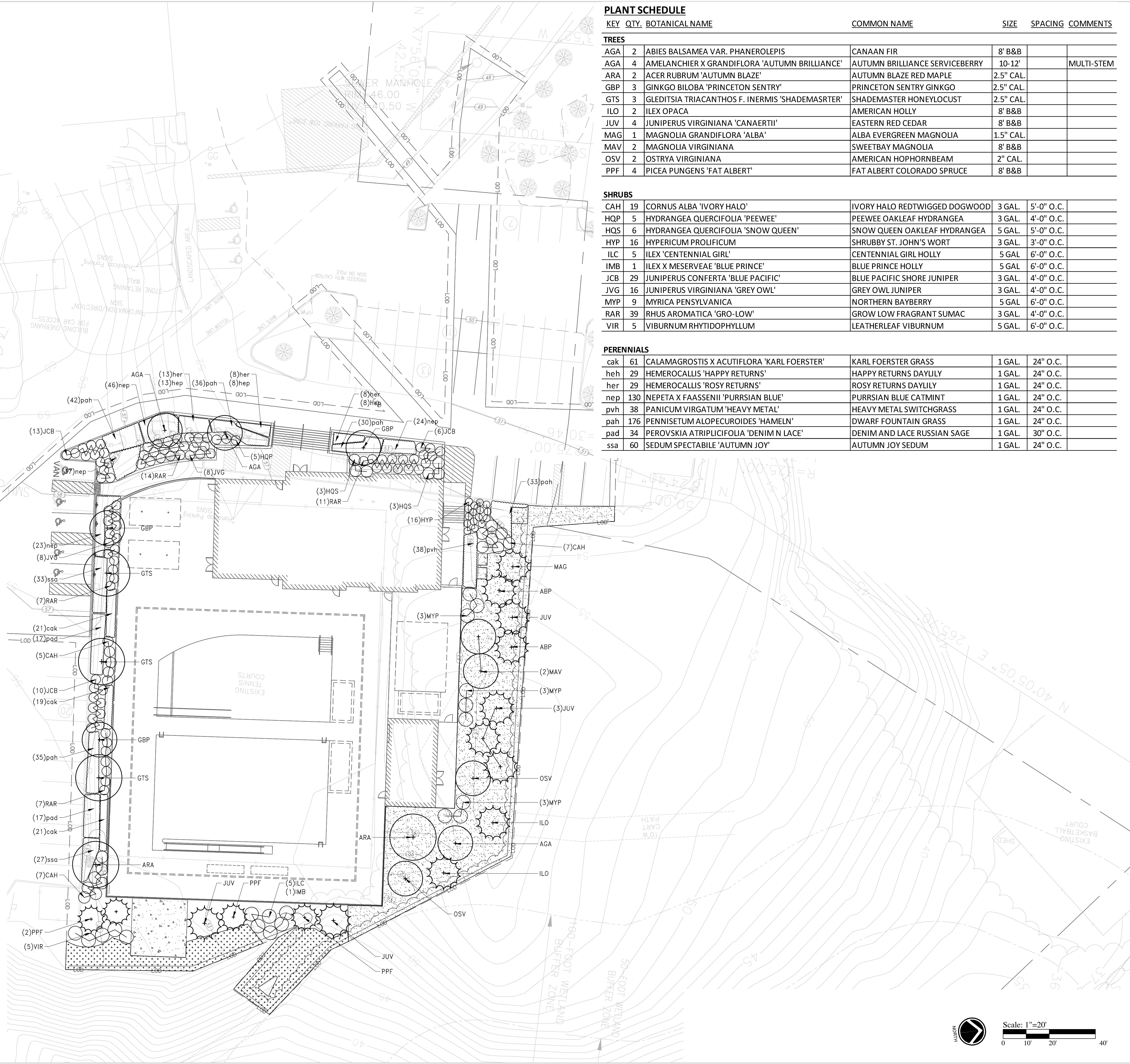
BOTANICAL NAME	COMMON NAME
<i>Festuca rubra</i>	Creeping Red Fescue
<i>Festuca brevipila</i> 'Charlot'	Hard Fescue 'Charlot'
<i>Festuca ovina</i> var. <i>duriuscula</i> 'Heron'	Hard Fescue 'Heron'
<i>Lolium multiflorum</i>	Annual Ryegrass

CONSERVATION SHADE SEED MIX shall be similar to "Conservation Shade Seed Mix" as manufactured by Vermont Wildflower Farm, of Hinesburg, VT; or approved equal. Approved equals may be submitted for evaluation, but must meet the following specifications:

BOTANICAL NAME	COMMON NAME
<i>Festuca rubra</i>	Creeping Red Fescue
<i>Festuca rubra</i> spp. <i>commutata</i>	Chewings Fescue
<i>Lolium multiflorum</i>	Annual Ryegrass
<i>Poa pratensis</i>	Kentucky Bluegrass

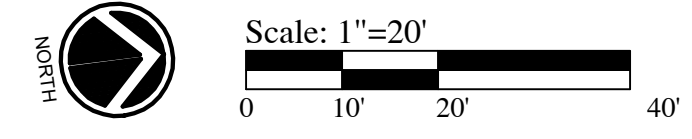
**PLANTING NOTES:**

- IF DISCREPANCIES EXIST BETWEEN THE NUMBER OF PLANTS DRAWN ON THE PLANTING PLAN AND THE NUMBER OF PLANTS IN THE PLANT LIST, THE PLANTING PLAN SHALL GOVERN.
- ALL NEW PLANT MATERIAL SHALL CONFORM TO THE MINIMUM GUIDELINES ESTABLISHED FOR NURSERY STOCK PUBLISHED BY THE AMERICAN ASSOCIATION OF NURSERYMEN, INC. IN ADDITION, ALL NEW PLANT MATERIAL FOR THE PROJECT SHALL BE OF SPECIMEN QUALITY.
- ALL NEW PLANTS TO BE BALLED AND BURLAPPED OR CONTAINER-GROWN, UNLESS OTHERWISE NOTED ON THE PLANT LIST.
- THE CONTRACTOR SHALL SUPPLY ALL NEW PLANT MATERIAL IN QUANTITIES SUFFICIENT TO COMPLETE THE PLANTING SHOWN ON THE DRAWINGS.
- ANY PROPOSED SUBSTITUTIONS OF PLANT SPECIES SHALL BE MADE WITH PLANTS OF EQUIVALENT OVERALL FORM, HEIGHT, BRANCHING HABIT, FLOWER, LEAF, COLOR, FRUIT AND CULTURE, AND ONLY AFTER WRITTEN APPROVAL OF THE LANDSCAPE ARCHITECT.
- ALL NEW PLANTS SHALL BE TAGGED AND APPROVED BY THE LANDSCAPE ARCHITECT AT THE NURSERY PRIOR TO DIGGING OR DELIVERY TO THE SITE. CONTRACTOR SHALL LOCATE AND VERIFY ALL EXISTING UTILITY LINES PRIOR TO PLANTING AND SHALL REPORT ANY CONFLICTS TO THE LANDSCAPE ARCHITECT.
- STAKE LOCATION OF ALL PROPOSED PLANTING FOR APPROVAL BY LANDSCAPE ARCHITECT PRIOR TO THE COMMENCEMENT OF PLANTING.
- NEW SHRUBS AND GROUND COVER SHALL BEAR THE SAME RELATIONSHIP TO GRADE AS IT BORE TO PREVIOUS GRADE. TREES SHALL BE SET 3" HIGHER THAN PREVIOUS GRADE. NO TREES SHALL BE PLANTED BEFORE ACCEPTANCE OF ROUGH GRADING.
- ALL PLANT BEDS TO RECEIVE THREE INCHES (3") OF BARK MULCH AS PER SPECIFICATIONS.
- ALL EXISTING TREES TO REMAIN SHALL BE PROPERLY PROTECTED DURING CONSTRUCTION. PROTECTION TECHNIQUES SHALL BE REVIEWED AND APPROVED BY THE LANDSCAPE ARCHITECT. THE PLACEMENT OF PROTECTION DEVICES ADDITIONAL TO THOSE NOTED SHALL, HOWEVER, BE AT THE CONTRACTOR'S DISCRETION.
- CONTRACTOR SHALL PROVIDE FULL DEPTHS OF LOAM AS NOTED ON DETAILS AND AS SPECIFIED, FOR ALL PLANTING.
- CONTRACTOR SHALL COORDINATE LOCATION OF ALL UTILITIES (LINES, DUCTS, CONDUITS, SLEEVES, FOOTINGS, ETC.) WITH LOCATIONS OF PROPOSED LANDSCAPE ELEMENTS (WALLS, FENCE, FOOTINGS, TREE ROOTBALLS, PROPOSED LIGHTING FOOTINGS, ETC.). CONTRACTOR SHALL REPORT ANY DISCREPANCIES TO LANDSCAPE ARCHITECT PRIOR TO CONTINUING WORK.
- CONTRACTOR IS RESPONSIBLE FOR ALL DAMAGE DUE TO OPERATIONS INSIDE AND OUTSIDE OF THE CONTRACT LIMIT LINE. ANY AREAS OUTSIDE THE LIMIT OF WORK THAT ARE DISTURBED SHALL BE RESTORED TO ITS ORIGINAL CONDITION AT NO ADDITIONAL COST TO THE OWNER.
- IN AREAS WHERE EXISTING PAVEMENTS ARE REMOVED AND ARE PROPOSED AS LAWN, THE CONTRACTOR SHALL REMOVE THE PAVEMENT AND BASE, PROVIDE FILL AND 6" TOPSOIL PRIOR TO SEEDING.



**PLANT SCHEDULE**

KEY	QTY.	BOTANICAL NAME	COMMON NAME	SIZE	SPACING	COMMENTS
<b>TREES</b>						
AGA	2	ABIES BALSAMEA VAR. PHANEROLEPIS	CANAAN FIR	8' B&B		
AGA	4	AMELANCHIER X GRANDIFLORA 'AUTUMN BRILLIANCE'	AUTUMN BRILLIANCE SERVICEBERRY	10-12'		MULTI-STEM
ARA	2	ACER RUBRUM 'AUTUMN BLAZE'	AUTUMN BLAZE RED MAPLE	2.5" CAL.		
GBS	3	GINKGO BILOBA 'PRINCETON SENTRY'	PRINCETON SENTRY GINKGO	2.5" CAL.		
GTS	3	GLEDITSIA TRIACANTHOS F. INERMIS 'SHADEMASRTER'	SHADEMASTER HONEYLOCUST	2.5" CAL.		
ILO	2	ILEX OPACA	AMERICAN HOLLY	8' B&B		
JUV	4	JUNIPERUS VIRGINIANA 'CANAERTII'	EASTERN RED CEDAR	8' B&B		
MAG	1	MAGNOLIA GRANDIFLORA 'ALBA'	ALBA EVERGREEN MAGNOLIA	1.5" CAL.		
MAV	2	MAGNOLIA VIRGINIANA	SWEETBAY MAGNOLIA	8' B&B		
OSV	2	OSTRYA VIRGINIANA	AMERICAN HOPHORNBEAM	2" CAL.		
PPF	4	PICEA PUNGENS 'FAT ALBERT'	FAT ALBERT COLORADO SPRUCE	8' B&B		
<b>SHRUBS</b>						
CAH	19	CORNUS ALBA 'IVORY HALO'	IVORY HALO REDTWIGGED DOGWOOD	3 GAL.	5'-0" O.C.	
HQP	5	HYDRANGEA QUERCIFOLIA 'PEEWEE'	PEEWEE OAKLEAF HYDRANGEA	3 GAL.	4'-0" O.C.	
HQS	6	HYDRANGEA QUERCIFOLIA 'SNOW QUEEN'	SNOW QUEEN OAKLEAF HYDRANGEA	5 GAL.	5'-0" O.C.	
HYP	16	HYPERICUM PROLIFICUM	SHRUBBY ST. JOHN'S WORT	3 GAL.	3'-0" O.C.	
ILC	5	ILEX 'CENTENNIAL GIRL'	CENTENNIAL GIRL HOLLY	5 GAL.	6'-0" O.C.	
IMB	1	ILEX X MESERVEAE 'BLUE PRINCE'	BLUE PRINCE HOLLY	5 GAL.	6'-0" O.C.	
JCB	29	JUNIPERUS CONFERTA 'BLUE PACIFIC'	BLUE PACIFIC SHORE JUNIPER	3 GAL.	4'-0" O.C.	
JVG	16	JUNIPERUS VIRGINIANA 'GREY OWL'	GREY OWL JUNIPER	3 GAL.	4'-0" O.C.	
MYP	9	MYRICA PENNSYLVANICA	NORTHERN BAYBERRY	5 GAL.	6'-0" O.C.	
RAR	39	RHUS AROMATICA 'GRO-LOW'	GROW LOW FRAGRANT SUMAC	3 GAL.	4'-0" O.C.	
VIR	5	VIBURNUM RHYTIDOPHYLLUM	LEATHERLEAF VIBURNUM	5 GAL.	6'-0" O.C.	
<b>PERENNIALS</b>						
cah	61	CALAMAGROSTIS X ACUTIFLORA 'KARL FOERSTER'	KARL FOERSTER GRASS	1 GAL.	24" O.C.	
heh	29	HEMEROCALLIS 'HAPPY RETURNS'	HAPPY RETURNS DAYLILY	1 GAL.	24" O.C.	
her	29	HEMEROCALLIS 'ROSY RETURNS'	ROSY RETURNS DAYLILY	1 GAL.	24" O.C.	
nep	130	NEPETA X FAASSENII 'PURRSIAN BLUE'	PURRSIAN BLUE CATMINT	1 GAL.	24" O.C.	
pvh	38	PANICUM VIRGATUM 'HEAVY METAL'	HEAVY METAL SWITCHGRASS	1 GAL.	24" O.C.	
pah	176	PENNISETUM ALOPECUROIDES 'HAMELN'	DWARF FOUNTAIN GRASS	1 GAL.	24" O.C.	
pad	34	PEROVSKIA ATRIPLICIFOLIA 'DENIM N LACE'	DENIM AND LACE RUSSIAN SAGE	1 GAL.	30" O.C.	
ssa	60	SEDUM SPECTABILE 'AUTUMN JOY'	AUTUMN JOY SEDUM	1 GAL.	24" O.C.	



**PROJECT TEAM**  
 CIVIL ENGINEERING  
 Pare Corporation  
 10 Lincoln Road, Suite 210  
 Foboro, MA 02035  
 MECHANICAL ENGINEER  
 Struppon Gumpertz & Heeger  
 480 Tatten Pond Road  
 Waltham, MA 02451  
 LANDSCAPE ARCHITECTURE  
 KZLA  
 38 Bromfield Street, Suite 202  
 Boston, MA 02108  
 MECHANICAL ENGINEER  
 Seaman Engineering Corp.  
 22 West Street, Unit C  
 Milbury, MA 01527



**Outdoor Pool Complex**  
 274 South Street, Hingham MA

DRAWING NUMBER	REVISIONS	DRAWING INFO
L1.0	DATE OF ISSUE: 06/29/2022	DATE OF ISSUE
	SUBMISSION: 100% CD	SUBMISSION
	PROJECT #: 21005.00	PROJECT #
	FILE NAME: SSC - Maintenance	FILE NAME
	SCALE: 1"=20'	SCALE
	DRAWN BY: TAH	DRAWN BY

**Planting Plan**