



May 24, 2023

Planning Board
Town of Hingham
Attn: Michael Silveira
210 Central Street
Hingham, MA 02043
Phone (781) 741-1419

**RE: Submittal of Revised Materials for
Proposed Flexible Residential Development (FRD) at
213-215 Cushing Street in Hingham, MA**

Dear Mr. Silveira and Members of the Board;

On behalf of the Applicant, WV Cushing LLC, this letter has been prepared to summarize the updates that have been made to the Definitive FRD Plans for the above referenced project. Included with this submission are:

- Revised Definitive FRD Plan prepared by Crocker Design Group, LLC dated November 21, 2022 and last revised on May 23, 2023
- Revised Landscape Submission Plan prepared by Hawk Design, Inc. dated May 22, 2023 included as Supplemental Plans to the Definitive FRD Plan Set
- Light Pole Spec Sheet from Pemco Lighting Products
- Street Light Fixture Product Details from Lamps Plus

The following updates have been made to the plans based on comments received from the Planning Department as well as feedback received from the Planning Board at the hearing on May 1, 2023:

- The waiver request from Figure 1 of the Town of Hingham Planning Board Rules and Regulations (R&R) regarding the reduction in Cape Cod Berm width from 18-inches to 12-inches has been removed. After discussion with the Planning Board and Department the waiver is not needed as 12-inch Cape Cod Berm is allowed per the subdivision regulations. (See sheet C-1)
- The waiver request from Figure 1 to allow utilities other than sewer to be located within the roadway pavement (Sheet C-1) has been removed. After discussion it was determined that this waiver is not needed as the subdivision regulations allow for utilities under the pavement.
- The waiver request from R&R 5.X3 has been revised to reduce the proposed mounting height of the streetlights from 14-feet (25-feet required) to 9-feet in height. The landscape plan (Sheet L-1) incorporates the revised street light design which removed the “acorn” style fixtures that were previously proposed in favor of individual residential lights next to each driveway that was requested by the Board.

- Four (4) proposed trees along the southern property line have been shifted into the tree yard as mitigation for the removal of two (2) existing protected trees, in addition to the trees that were previously proposed in the tree yard. See revised Landscape Plan (Sheet L-1).

Should you have any questions or require any further information, please do not hesitate to contact Taylor Corsano at taylorcorsano@crockerdesigngroup.com or 781-919-0808.

Sincerely,
Crocker Design Group LLC

A handwritten signature in black ink, appearing to read "Taylor Corsano". The signature is fluid and cursive, with the first name "Taylor" and last name "Corsano" clearly distinguishable.

Taylor Corsano
Project Manager



A L U M I N U M P O L E S

Specifications and Features:

- 8' to 30' mounting heights (16' - 30' tapered only)
- For single or multiple luminaire mounting
- Luminaires may be mounted on tenons, brackets or shaft may be drilled to manufacturer's mounting specifications

Shaft

Direct Embedment

Unless otherwise specified, the length of the embedded section of a 4" diameter is 3', 5" and 6" shaft is 4', and 7" and 8" shaft is 5'. A 1 1/2" diameter grommetted wire inlet hole located 1' 6" below grade is included. The embedded section of the standard is coated inside and outside with zinc-rich paint.

Ground Lug

The ground lug is a tab that is welded to the inside of the shaft, has a tapped 3/8" -16 hole to accommodate the ground connector, and is located opposite the hand hole or wire inlet hole.

Tenons

T300=Standard for post top (2 7/8" OD x 3" tall)

T355=Standard for shepherd's crooks (2 7/8" OD x 5.5" tall)

CAP=No tenon, removable cap

Finish - Super Durable Polyester TGIC Powder Coat

- Standard finishes: high gloss black, textured black, high gloss white, medium bronze, dark bronze, green, gray, silver metallic
- Premium finishes (adder): Verde patina, pewter patina, silver sparkle, semi-gloss or matte black, satin brushed
- Custom and Marine-grade finishes are available. All RAL colors are available to match (adder).

Accessories (Adder)

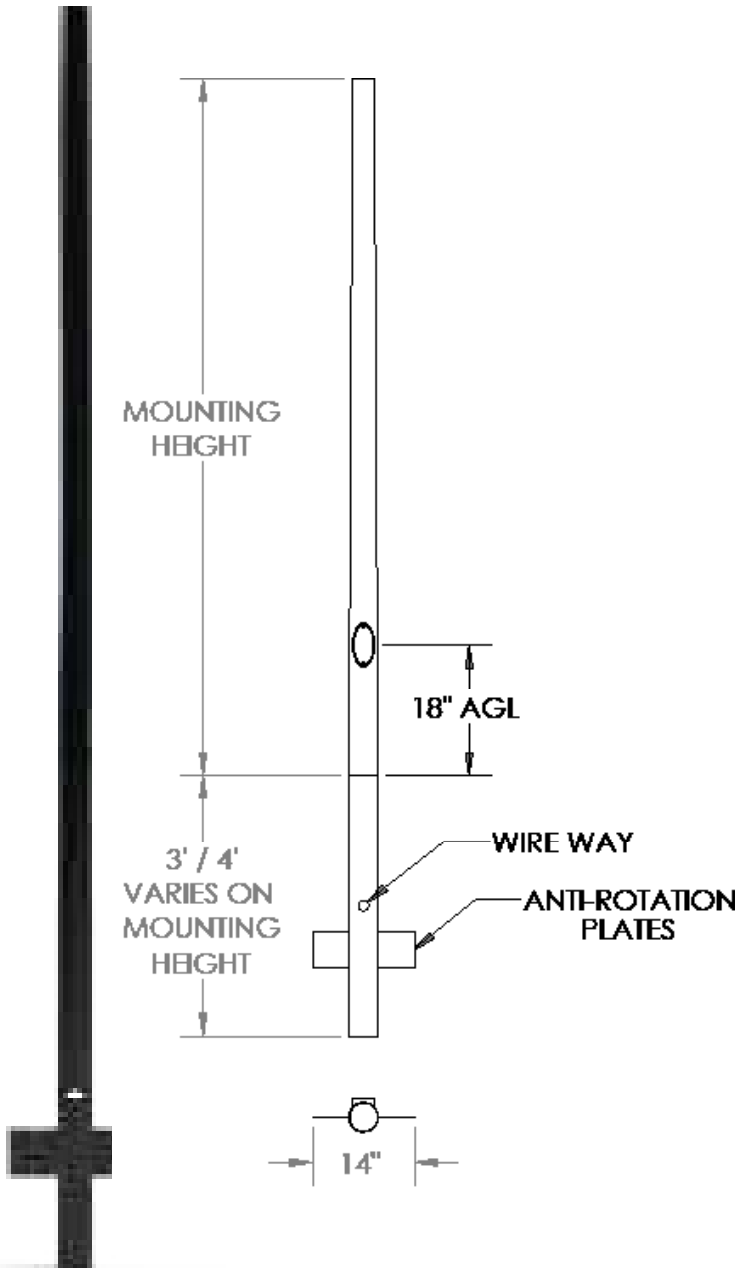
GFIC=Weatherproof GFI in-use cover, cast aluminum (must indicate location)

GFIP=Weatherproof GFI in-use cover, plastic (must indicate location)

USB=Dual USB port (must indicate location)

HH=Handhole

ARD=Anti-Rotation Device





A L U M I N U M P O L E S

Order Information Example: 53-12-M-S-125-T300-N-SB

Diameter	Height	M	S	Wall Size	Tenon	Accessories (Adder)	Finish
43=4"-3" Tapered 53=5"-3" Tapered 64=6"-4" Tapered 74=7"-4" Tapered 84=8"-4" Tapered	8=8' 10=10' 12=12' 14=14' 16=16' 18=18' 20=20' 25=25' 30=30'	M=Direct Burial	S=Smooth	Refer to Chart	T300=2 7/8" OD x 3" Tall T355=2 7/8" OD x 5.5" Tall CAP=Removable cap, no tenon N=None	N=None GFIC=GFI in-use cover, cast aluminum* GFIP=GFI in-use cover, plastic* USB=Dual USB port* HH=Handhole ARD=Anti-Rotation Device *Please indicate location	BK=Black BZ=Bronze DBZ=Dark Bronze WH=White GR=Green SM=Silver Metallic GY=Light Gray TBK=Textured Black <i>Premium Colors (adder)</i> SB=Satin Brushed VP=Verde Patina SS=Silver Sparkle PP=Pewter Patina CC=Custom Color (Consult Factory)

POLES		TYPICAL WEIGHT AND ALLOWABLE SIZE OF LUMINAIRES*						DIMENSIONS OF STANDARDS				
MODEL NUMBER	MOUNT HEIGHT	LUMINAIRE WEIGHT-LBS	EFFECTIVE PROJECTED AREA-SQ FT-AT:					EXPOSED HEIGHT	SHAFT LENGTH	TOP	BUTT	WALL
			70 MPH	80 MPH	90 MPH	100 MPH	110 MPH					
438-M/125	8'	75	19.1	14.4	11.1	8.8	7.1	7' 8"	10' 8"	3"	4"	.125
4310-M/125	10'	75	14.3	10.6	8.1	6.3	5.0	9' 8"	12' 8"	3"	5"	.125
4312-M/125	12'	75	11.0	8.0	6.0	4.5	3.5	11' 8"	14' 8"	3"	4"	.125
5312-M/125	12'	75	18.5	13.8	10.5	8.3	6.6	11' 8"	15' 8"	3"	5"	.125
4314-M/125	14'	75	8.5	6.0	4.4	3.2	2.4	13' 8"	16' 8"	3"	4"	.125
5314-M/125	14'	75	14.8	10.8	8.2	6.3	5.0	13' 8"	17' 8"	3"	5"	.125
4316-M/125	16'	75	7.1	5.0	3.5	2.4	1.7	15' 8"	18' 8"	3"	4"	.125
5316-M/125	16'	75	12.0	8.6	6.4	4.8	3.8	15' 8"	19' 8"	3"	5"	.125
5316-M/156	16'	75	15.3	11.1	8.4	6.5	5.1	15' 8"	19' 8"	3"	5"	.156
5318-M/125	18'	75	9.7	6.7	4.9	3.6	2.7	17' 8"	21' 8"	3"	5"	.125
5318-M/156	18'	150	12.2	8.7	6.4	4.8	3.8	17' 8"	21' 8"	3"	5"	.156
5318-M/188	18'	150	19.1	14.1	10.8	8.5	6.9	17' 8"	21' 8"	4"	6"	.188
5320-M/125	20'	150	8.2	5.5	3.8	2.6	1.9	19' 8"	23' 8"	3"	5"	.125
5320-M/156	20'	150	10.4	7.2	5.1	3.7	2.8	19' 8"	23' 8"	3"	5"	.156
6425-M/156	25'	150	10.5	7.1	5.1	3.8	2.9	24' 8"	28' 8"	4"	6"	.156
6425-M/188	25'	150	13.5	9.4	6.9	5.3	4.2	24' 8"	28' 8"	4"	6"	.188
7430-M/156	30'	150	11.1	7.5	5.3	4.0	3.0	29' 8"	34' 8"	4"	7"	.156
8430-M/188	30'	150	16.7	12.0	9.1	7.0	5.5	29' 8"	34' 8"	4 1/2"	8"	.188



Z-Lite 1 Light Post Mount Light in Black Finish

\$188.00

or 4 interest-free payments of **\$47.00** with sezzle ⓘ

FREE SHIPPING & **FREE RETURNS*** | [Low Price Guarantee](#)

In Stock - [Ships in 3 to 5 Days](#)

1

ADD TO CART

♡ SAVE



DESIGN CHAT

Product Details

- Product Dimensions: 8.0 inches wide, 16.0 inches high, 6.1 pounds in weight.
- Uses Standard Base type bulbs.
- Produces a maximum wattage of 100 watts.
- 1 Light Post Mount Light is produced by Z-Lite Inc.

SPECIFICATIONS

PRODUCT ATTRIBUTES

Color	Black
-------	-------

TECHNICAL SPECIFICATIONS

Height	16.00 inches
Weight	6.14 pounds
Max Wattage	100 watts
Bulbs Included	Light bulbs not included
UPC Code	685659037722

Manufacturer Number	531PHMR-BK
---------------------	------------

More Like This | [View All](#)



Z-Lite 1 Light Post Mount Light in Black Finish

\$282.00



Z-Lite 1 Light Post Mount Light in Black Finish

\$202.00



Z-Lite 1 Light Post Mount Light in Black Finish

\$290.00



Z-Lite 2 Light Post Mount Light in Black Finish

\$352.00

Questions & Answers

Ask a question




Be the first to ask a question about this item.

Customer Reviews

Review For a Chance to Win \$500.00! [view rules](#)

Be the first to review this item.

WRITE A REVIEW



 **BACK TO TOP**